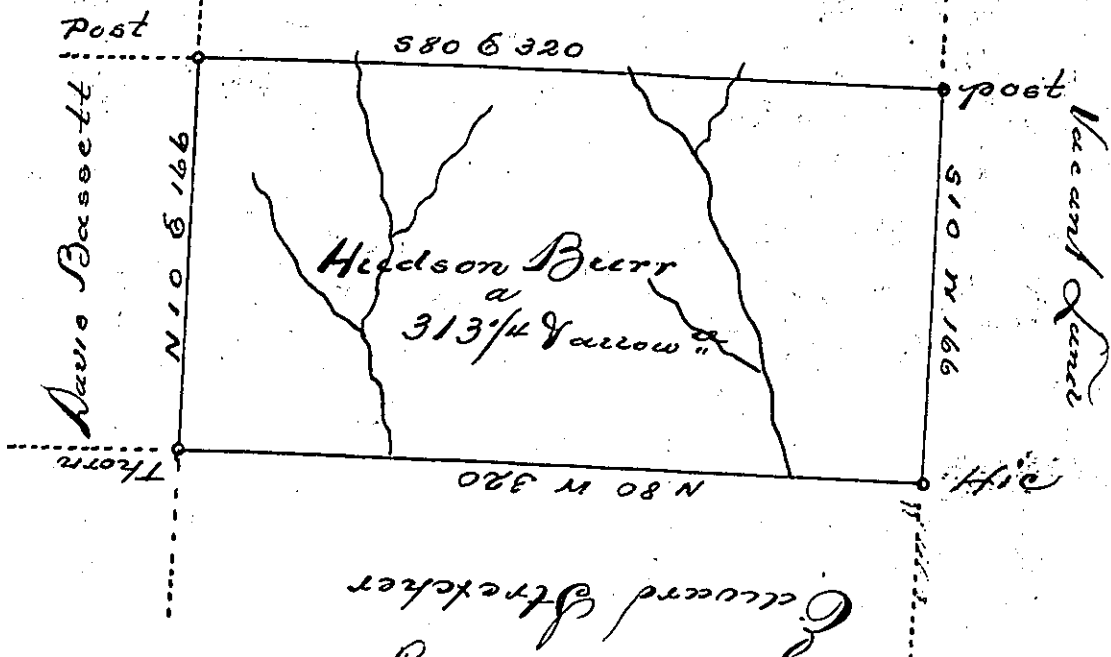


Pg - 123

Josiah Hewes

Ellis Lewis



Edward Stretcher

Pg - 122

Survey'd to Hudson Burr on the 28th day of November 1774
 The above described Tract of Three hundred thirteen acres & a
 quarter of an acre & the usual allowance of six ft 6 in
 Situate on a branch of the Two Lick Creek about three
 miles up said branch above & adjoining a survey made for
 Enoch Morgan in Right of Edward Stretcher, In-
 cluding a Thorn Bottom in Westmoreland County, By
 warrant of the 20th day of January 1774

To John Lukens Esqr.
 J. Genl.

J. Joshua Elder D. J.

IN TESTIMONY that the above is a copy of the original remaining on file in
 the Department of Internal Affairs of Pennsylvania, made
 conformably to an Act of Assembly approved the 16th day of
 February, 1833, I have hereunto set my Hand and caused
 the Seal of said Department to be affixed at Harrisburg,
 this fifth day of September, 1899.

James W. Latta
 Secretary of Internal Affairs.